

# Be Exceptional!

Develop your production  
in Valmiera Industrial Park

Public parking and  
public transport to  
the city centre

Transshipment area  
**4.45 ha**  
(with a load-bearing  
capacity of 60 t)

Available  
building area  
**37 ha**

Available utilities:  
- **Water supply**  
- **Sewerage**  
- **Electricity (15 MW)**

Railway in the area  
**3.1 km**  
(connected to public  
railway Riga - Estonia)



[investinvalmiera.eu](http://investinvalmiera.eu)

\*Building area visualisation



Funded by  
the European Union  
NextGenerationEU

**2027**  
National  
Development Plan

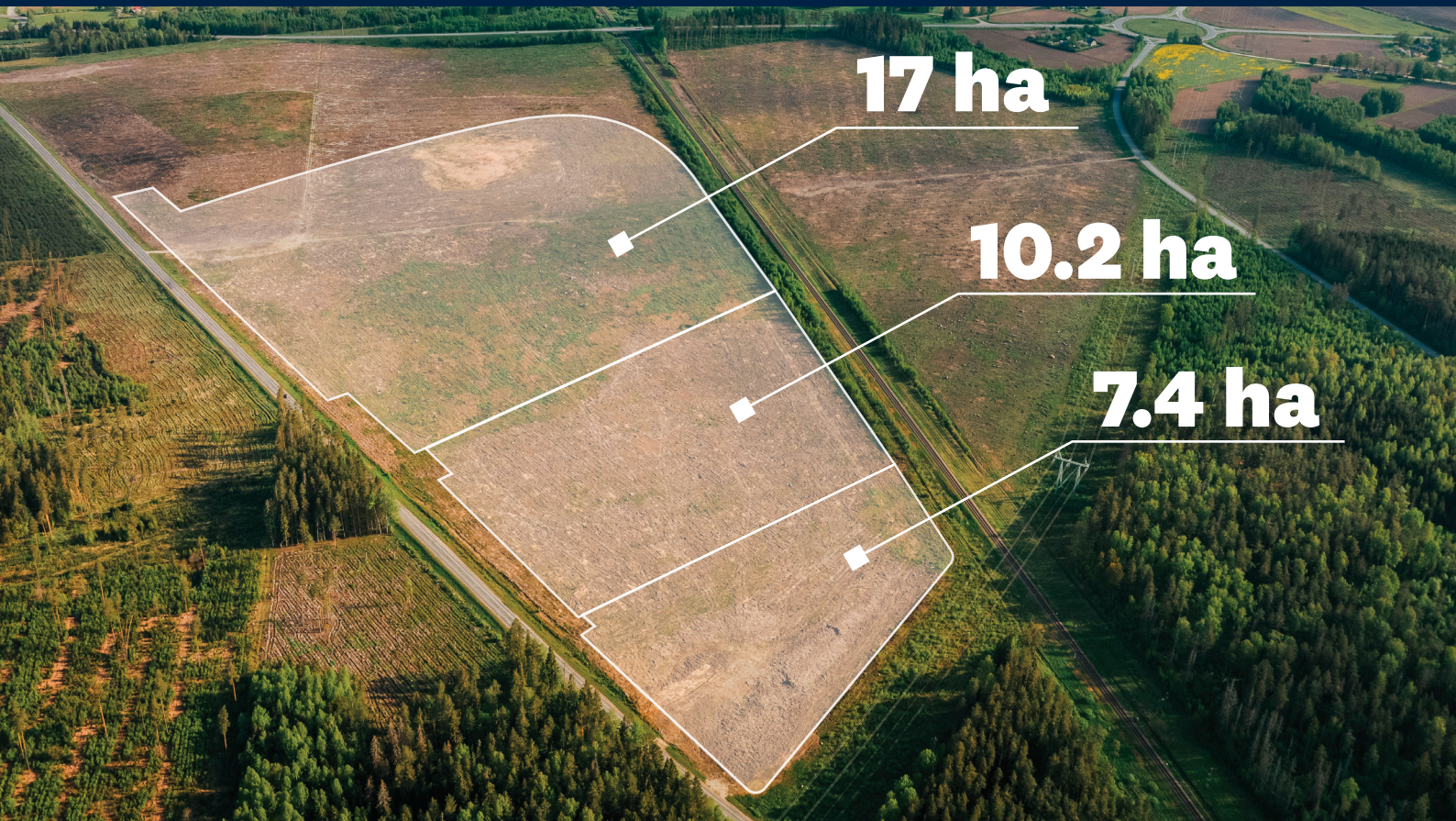


# Auctions of building rights

Possibility to apply to rent one or more land plots

Closing date for applications:

**February 10, 2025, at 5:00 PM (EET)**



This is a place for business with capacity - a large area prepared for industrial development in a strategically advantageous location. Available for local and international companies.

## Key features:

- ◆ Access to public rail and regional roads
- ◆ Industrial electricity connection
- ◆ Industrial site with a load-bearing capacity of 60 t for loading
- ◆ Possibility to connect to utilities (water supply, municipal sewerage, storm water sewerage)
- ◆ Spacious and illuminated parking areas, long-term parking for trucks and light vehicles
- ◆ Professional maintenance and management service
- ◆ The term for building rights - **from 45 to 70 years** depending on the amount of investment
- ◆ For the first 24 months, a reduced building rights fee (50% of the current building rights fee at that time)
- ◆ A relief of 90% on the property tax (until the industrial production building is put into operation)

# VALMIERA

Dzīvojam zaļi!  
Evergreen city!

## Development Centre of National Importance in Latvia

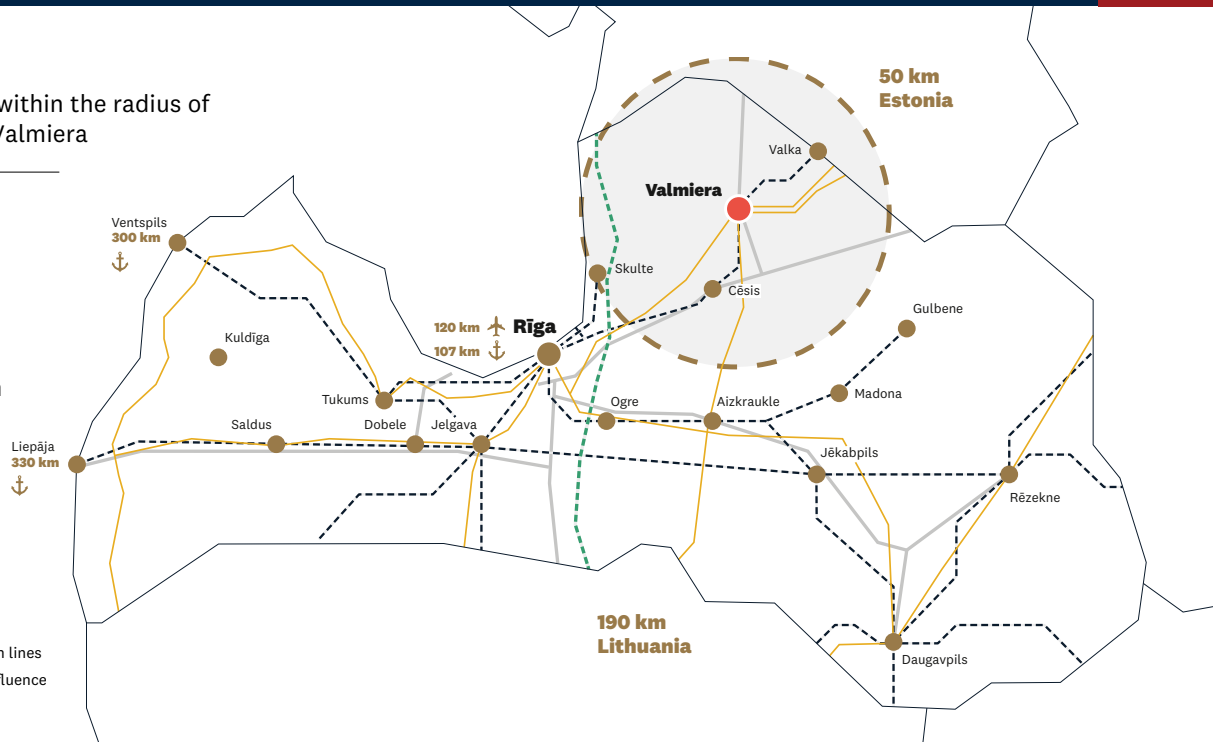
## Two industrial parks for business growth

< 170 000

Number of inhabitants within the radius of economic influence of Valmiera

215 km	Tallinn
295 km	Helsinki
315 km	Vilnius
470 km	Stockholm
820 km	Copenhagen
880 km	Oslo

- Railway
- - - Rail Baltica railway
- Main gas pipeline
- 330 kV power transmission lines
- - - The radius of economic influence of Valmiera (50 km)



**GDP - 2nd place**  
right after the capital of Latvia -  
**Riga**

**More than 80 active foreign**  
**direct investment companies** from  
Luxembourg, Sweden, Germany, Lithuania,  
the Netherlands, Denmark, Estonia, Georgia,  
Belgium, Ukraine and other countries



**Entrepreneurship-based**  
**EDUCATION system**

Professional and higher education adjusted  
to the needs of business sector

**99,3%** of people in the region believe  
that **the city is friendly for families**  
**with young children\***

\*Central Statistical Bureau of Latvia, 2024



## Contact us

---

### Valmiera Municipality Capital Management and Business Support Department



**Sandis Svarinskis**

☎ +371 64207132

✉ sandis.svarinskis@valmierasnovads.lv



**Inita Niedzvedze**

☎ +371 64207157

✉ inita.niedzvedze@valmierasnovads.lv